

HW

p683-685

3-11,
16a, 17, 18, 20, 21
~~16, 18, 19, 20, 21~~

HW Key

(3) $65 \times 2 = 130^\circ$

(4) 117×2

(5) $m\angle I = 130$

(6) D

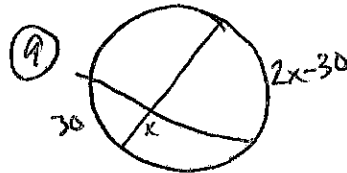
(7) $x = \frac{1}{2}(85 + 145)$

(8) $\frac{180}{-122.5}$

$57.5 = \frac{1}{2}(x + 45)$

$115 = x + 45$

$70 = x$



$x = \frac{1}{2}(360 - 2x - 30 + 30)$

$x = 180 - x$

$2x = 180$

$x = 90$

or

$180 - x = \frac{1}{2}(2x - 30 + 30)$

$180 - x = x$

$180 = 2x$

$90 = x$

(10) $\frac{360}{-247}$
 113

$x = \frac{1}{2}(247 - 113)$
 134

$x = 67^\circ$

(11)

$29 = \frac{1}{2}(114 - x)$

$58 = 114 - x$

$-56 = -x$

$56 = x$

(12)

$34 = \frac{1}{2}(3x - 2 - (x + 6))$
 $2x - 8$

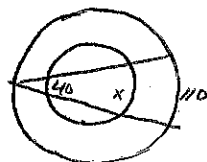
$x - 4$

$38 = x$

(13)

D
 $m\angle P = 150$

(16)



$\frac{1}{2}(x - 40) = \frac{1}{2}110$

55

$x - 40$

$x = 150$

(6)

$C = b - a$

120

100

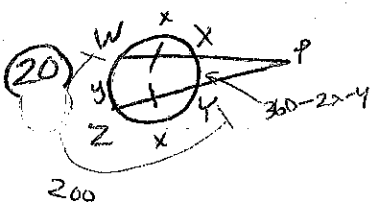
140

(17)

$40 = \frac{1}{2}(7x - 3x)$
 $4x$

$40 = 2x$

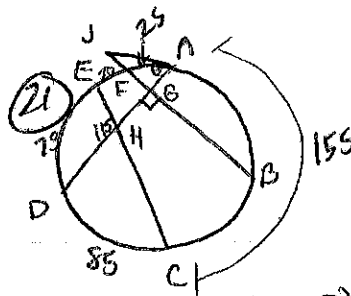
$20 = x$



$m\angle P = \frac{1}{2}(y - 360 + 2x + y)$
 $\frac{1}{2}(2x + 2y - 360)$
 $x + y - 180$

$x + y = 200$

$m\angle P = 20$



$m\angle D = 75^\circ$

$m\angle A = 85^\circ$

$115 = \frac{1}{2}(165 + \angle D)$

$90 = \frac{1}{2}(20 + m\angle C)$

$m\angle C$

360

-200

$= 160^\circ$